



St Margaret's Community Liaison Group Surface Water Management

Sinéad Murphy, Senior Engineer
12th April 2018

Drainage on New Runway - Process



- ABP grant of permission with conditions including surface water
- FCC/DAA consultation to discharge the condition
- Issues raised –biological, hydraulic
- Additional information
- Approved in November 2016

Drainage on New Runway - Technical



- Greenfield runoff
- Collect runway runoff
- Assess quality
 - river v sewer
- Sewer – holding tank, discharge to North Fringe Sewer
- River – attenuation tank, discharge to Sluice

Operational Drainage

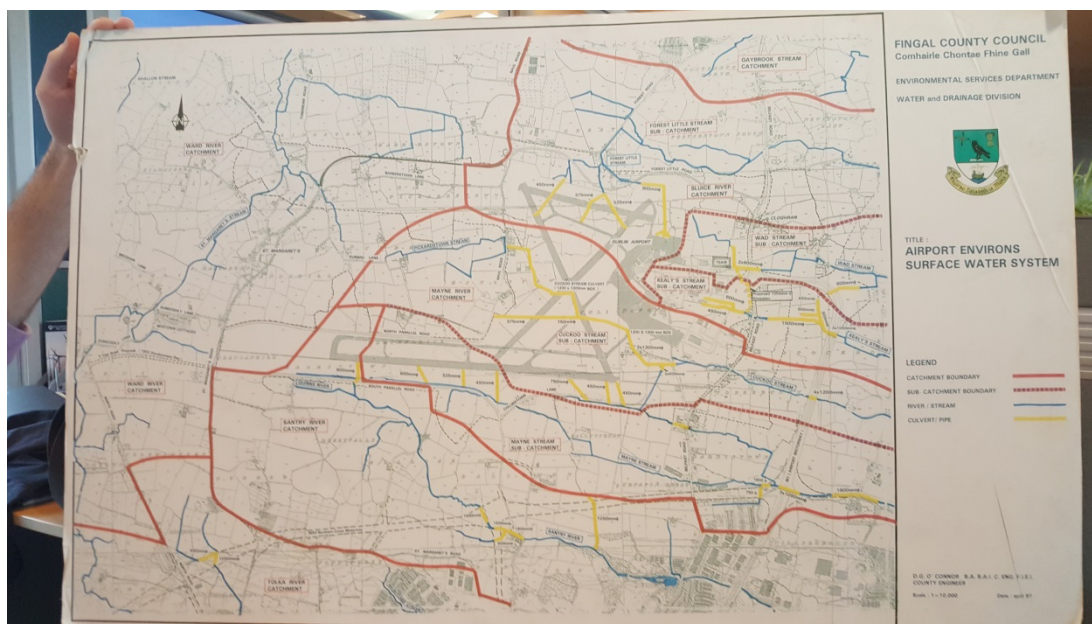


- Dunbro Lane – maintenance, ditch & gully cleaning
- Kilreesk Lane and Millhead - Water leads formed, ditches cleaned, pipes jet vaced
- Broughan Lane: - road flooding, works carried out.
- Newtown Cottages: Maintenance September 2014. Repair works to road gullies and surface water manhole at the turn into Newtown Cottages St Margaret's are due within the next fortnight.



Dublin Airport Local Area Plan

- Issues Paper end Q2 2018
- Flood Risk Assessment (FRA)
- Storm Water Management Plan/Drainage Strategy/SUDS Strategy

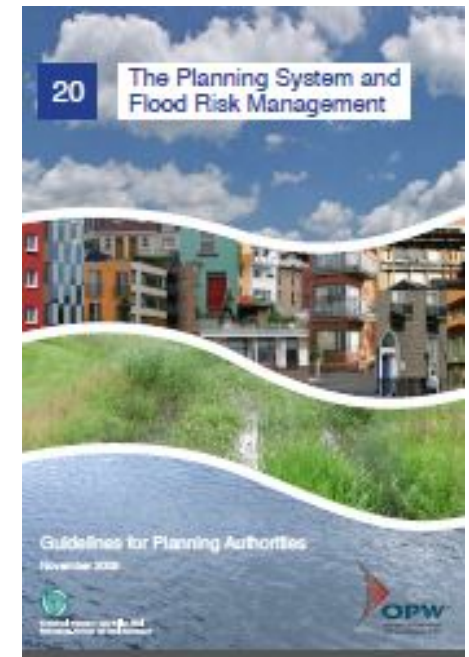


Dublin Airport Local Area Plan



Flood Risk Assessment

- Guidelines for Planning Authorities – Planning System and Flood Risk Management – OPW 2009
- Fingal East Meath Flood Risk Management Study (FEMFRAMS)
- County Development Plan – Strategic Flood Risk Assessment 2017
- Project/Plan Specific Flood Risk Assessment
- Fluvial/Pluvial



Dublin Airport Local Area Plan



Drainage Strategy

- County Development Plan – GDSDS
- Best practice eg CIRIA SUDS manual
- Constraints
- Sustainability/climate change

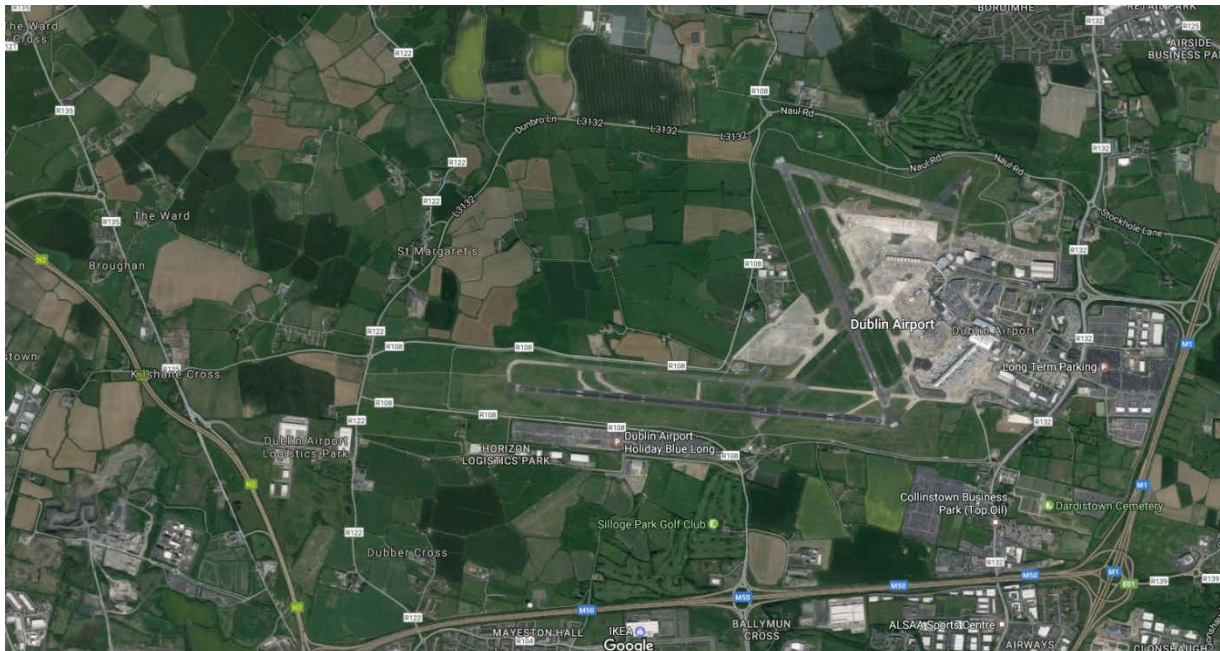


Dublin Airport Local Area Plan



Flood Risk Assessment/Drainage Strategy

- Theory
- Validation
- Information welcome





Thank you
Go raibh maith agaibh